



With SFA, Plumb the impossible



COMMERCIAL APPLICATIONS

Convenience Stores & supermarkets 

Hospitality Industry 

Commercial premises & offices 

Beauty & body care 

Healthcare & education services 

Mobile units 

SFA

For over 55 years, SFA's goal has been to provide individual and collective waste water drainage solutions (business premises, catering, industry, schools, hotels, shopping centres).

As the French inventor of the famed SANIBROYEUR® product, SFA group is now one of the world leaders in sanitary water services. Synonymous with quality and technical expertise, our products are made in our production facilities in France and comply with the most stringent requirements. We never fail to meet our customers' requirements.

Thanks to our integrated production methods and significant resources devoted to research and development, the SFA Group is committed to providing our installers, local authorities and distributors with **solutions suited to every application.**

Innovation, industrial effectiveness and customer service are all values shared amongst our staff. Every day we strive to apply these values to our work and pass on a single aim: to offer millions of users of SFA products across the world the same quality of service yesterday, today and tomorrow.

The range of SFA disposal machines, pumps and lifting stations are perfectly suited to intensive commercial usage and enable the drainage of all types of effluents (black water, grey water, hot/soapy waste water).

Advantages of SFA products:

- Vertical discharge: Installation of sanitary and water drainage devices underground
- Horizontal discharge: Installation far away from the soil stack or sewer
- Cost-effective solution: Easy and quick installation without requiring major work where gravity drainage is not possible



Before









After

The SFA range of macerators, pumps and lifting stations offers intelligent and dedicated solutions to provide more and more sanitary options, in places where gravity drainage is not possible. Reliable and perfectly suited for intensive use, SFA products can be installed anywhere, without the need for major building works, to keep your business running.

SFA

CONTENTS

	Convenience stores & supermarkets	
	Convenience store – SANISPEED®	p.4
	Supermarket – SANICOM® 1	p.5
	Hospitality Industry	
	Bar – SANIBEST® Pro	p.6
	Café – SANISPEED®	p.7
	Hotel – SANISHOWER® Flat	p.8
	Fast food restaurant – SANICOM® 1	p.9
	Coffee Shop – SANISPEED®	p.10
	Commercial premises & offices	
	Lawyers' office – SANITOP®	p.11
	Office – SANISPEED®	p.12
	Plant – SANICUBIC® 2 Pro	p.13
	Mining camp – SANIBEST® Pro	p.14
	Bank – SANICUBIC® 2 Pro	p.15

	Beauty & body care	
	Fitness centre – SANICUBIC® 2 XL	p.16
	Hairdressing salon – SANICOM® 1	p.17
	Beauty salon – SANICOMPACT® Pro	p.18
	Fitness centre/Steam room – SANICUBIC® 2 Pro	p.19
	Healthcare & education services	
	Dental clinic – SANISHOWER®	p.20
	Retirement home – SANICOM® 1	p.21
	Nursery – SANITOP®	p.22
	University campus – SANICUBIC® 2 Pro / SANIBEST® Pro	p.23
	Mobile units	
	Mobile bathroom – SANIPRO® XR	p.24
	Motorhome – SANICOMPACT® Pro	p.25
	Canal boat – SANIPLUS® / SANISPEED®	p.26
	Work camp – SANICUBIC® 2 Pro	p.27



CONVENIENCE STORE

CHALLENGE

- Remove waste water from coffee machines that drain into a bucket which staff have to empty regularly.
- Risk of overflowing and odours.



SOLUTION

- Six hundred SANISPEED® pumps were installed under the coffee machines to drain away the waste water directly into the main drainage pipe.
- SANISPEED® pump drains waste water up to 7m vertically and 70m horizontally.
- Saves time for store employees and removes the risk of leaks and odours.

SANISPEED®



PRODUCT ADVANTAGES

- Easy and quick to install
- Working temperature of 75°C
- Silent operation
- Flow rate : > 100L/min

Entrance of the convenience store



Before

After



SUPERMARKET

CHALLENGE

- Evacuate condensate from bread ovens.
- The ovens, installed in the middle of the supermarket, are too far away from the main drainage pipe located at the entrance.

SOLUTION

- Two thousand five hundred SANICOM® 1 lifting pumps were installed near the ovens to drain waste water, with no need for major construction work.
- Perfectly suited for commercial purposes, SANICOM® 1 enables waste water to be drained up to 8m vertically and 80m horizontally.



SANICOM® 1



PRODUCT ADVANTAGES

- Easy to install – Floor-standing
- Working temperature of 90°C
- 2 inlets (DN 40) / 1 outlet (DN 32)
- Flow rate : >125L/min

Supermarket entrance



Bread ovens



Supermarket bakery





BAR

CHALLENGE

- Install toilets in the basement of a bar.
- The main drainage pipe is located on the upper level.

SOLUTION

- The installation of a SANIBEST® Pro macerator allows waste water to drain from the toilet to the main soil stack located on the ground floor.
- Perfectly suited for commercial purposes, SANIBEST® Pro enables waste water to be drained up to 7m vertically and 100m horizontally.
- SANIBEST® Pro is a heavy duty macerator specially designed for intensive use in a commercial environment.



SANIBEST® Pro



PRODUCT ADVANTAGES

- High performance blade for commercial use
- Direct access to the electrical parts through the cover
- Multiple connections (toilet, sink, shower, bidet)
- Flow rate : >140L/min

Bar located on the ground floor



SANIBEST® Pro installed in the basement



CAFÉ

CHALLENGE

- / Evacuate grey water from the sink and the dishwasher in a café some distance from the main drainage pipe.
- / Changing the location of the existing equipment would be too costly.



SOLUTION

- / A SANISPEED® pump was discreetly installed under the sink to drain waste water to the main soil stack located at the back of the room.
- / No changes had to be made to the arrangement of the equipment and no major work had to be undertaken.
- / SANISPEED® pump drains waste water up to 7m vertically and 70m horizontally.

SANISPEED®



PRODUCT ADVANTAGES

- Easy and quick to install
- Working temperature of 75°C
- Silent operation
- Flow rate : >100L/min

Café interior



SANISPEED® pump installed under the sink



Café counter



HOTEL

CHALLENGE

- Build bedrooms with WC, wash basins and showers in the basement of a hotel.
- Impossible to reach the main drainage pipe by gravity.



SOLUTION

- SANISHOWER® Flat enables the draining of grey water from showers and wash basins to the main drainage pipe.
- SANISHOWER® Flat is perfectly suited to flat shower trays and can drain waste water up to 3 m vertically and 30 m horizontally.

SANISHOWER® FLAT



PRODUCT ADVANTAGES

- Flat gully compatible with most shower trays
- Low level activation (30 mm)
- 2 inlets (1 DN 32 / 1 DN 40)
- Flow rate : >45L/min

Hotel reception



SANISHOWER® Flat installed in the technical area behind the bathrooms



FAST FOOD RESTAURANT



CHALLENGE

- / Drain hot water condensate from the oven to the main soil stack.
- / This restaurant, located in a shopping centre, has no gravitational flow drainage nearby.

SOLUTION

- / A SANICOM®1 lifting pump was installed in the kitchen of the restaurant to enable waste water to be removed to the main drainage pipe, without changing the layout of the equipment.
- / Perfectly suited for commercial purposes, SANICOM® 1 enables waste water to be drained up to 8m vertically and 80m horizontally.

SANICOM® 1



PRODUCT ADVANTAGES

- Easy to install – Floor-standing
- Working temperature of 90°C
- 2 inlets (DN 40) / 1 outlet (DN 32)
- Flow rate : >125L/min

Front view of the restaurant



Restaurant kitchen



SANICOM® 1 lifting pump installed



COFFEE SHOP

CHALLENGE

- Install a kitchen with sink and dishwasher in the basement of a coffee shop.
- The main drainage pipe is located on the upper level.



SOLUTION

- A SANISPEED® pump was installed near the sink and the dishwasher to remove warm waste water to the main drainage pipe located at street level.
- The SANISPEED® pump enables grey water to be pumped up to 7m vertically and 70m horizontally.

SANISPEED®



PRODUCT ADVANTAGES

- Easy and quick to install
- Working temperature of 75°C
- Silent operation
- Flow rate : >100L/min

Front window of the coffee shop



SANISPEED® pump installed in the basement



LAWYER'S OFFICE

CHALLENGE

Install an additional toilet with wash basin in an office located below the main drainage.

SOLUTION

A SANITOP® macerator was installed to remove waste water from a toilet and a wash basin without the need for major building work.

SANITOP® enables waste water to be removed from a toilet and wash basin up to 5m vertically and 10m horizontally.

Thanks to its high-performance macerator, waste can be removed in small diameter pipes (22/28/32mm) for discreet installation.



SANITOP®



PRODUCT ADVANTAGES

- Possible connections: WC, wash basin
- Central access on the lid allows easy maintenance and removal of blockages
- Silent operation
- Carbon filter included, to neutralise odours

Installation without major building work for an additional toilet with wash basin



SANITOP® installed discreetly behind the toilet



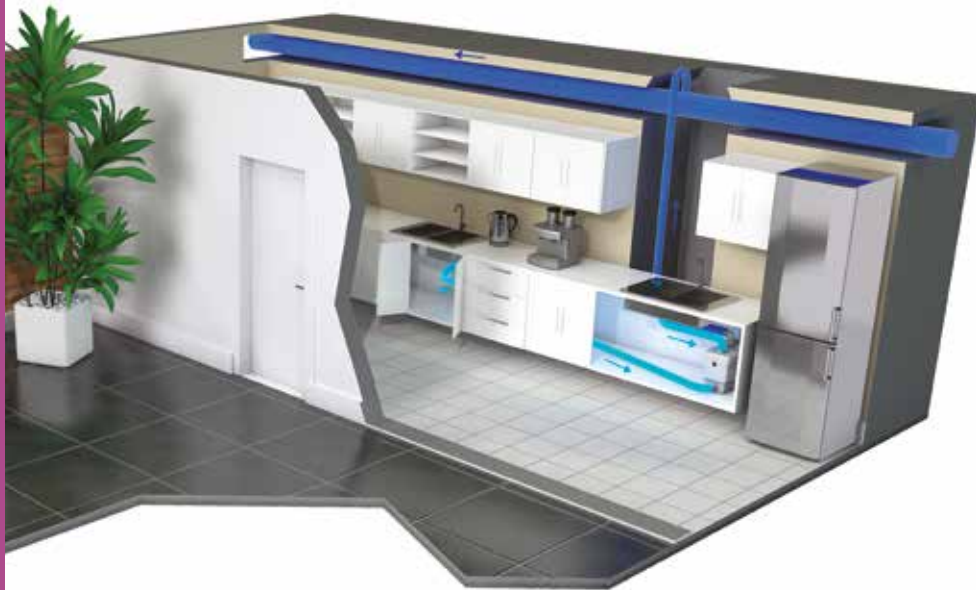
OFFICE

CHALLENGE

Install a staff kitchen for a bank located on the 10th floor without carrying out major construction work.

SOLUTION

- A SANISPEED® pump was discreetly installed to remove waste water from the sink to the main drainage pipe located on the upper level.
- The installation was carried out within a matter of hours without any modifications made to the building structure.
- The SANISPEED® pump enables waste water - even warm water - to be pumped up to 7m vertically and 70m horizontally.



SANISPEED®



PRODUCT ADVANTAGES

- Easy and quick to install
- Working temperature of 75°C
- Silent operation
- Flow rate : >100L/min

Bank offices located on the 10th floor of a building



SANISPEED® pump installed to remove kitchen waste water



PLANT



CHALLENGE

- Install staff toilets in the basement of a factory.
- The main drainage pipe is located 9m above and 50m away.

SOLUTION

- Two SANICUBIC® 2 Pro lifting stations were installed in a technical room located in the basement of the building to collect and remove waste water from 16 toilets and 2 wash basins.
- The SANICUBIC® 2 Pro is perfectly suited to commercial use and enables black and grey water to be drained up to 11 m vertically.

SANICUBIC® 2 Pro



PRODUCT ADVANTAGES

- Easy to install – Floor-standing
- High-performance cutting system
- Multiple inlet diameters (DN 40/50/100/110)
- 2 motors for double the security
- IP 68 rated

Factory premises



Toilets installed for factory staff



Two SANICUBIC® 2 Pro Installed in the basement to remove waste water



MINING CAMP



CHALLENGE

- Install temporary prefabricated accommodation with toilets, wash basins and showers for mine workers.
- No waste water drainage network is available nearby. Impossible to undertake heavy construction work.

SOLUTION

- SANIBEST® Pro macerators were installed to drain waste water to a holding tank 30m away.
- Perfectly suited for commercial purposes, SANIBEST® Pro enables waste water to be drained up to 7m vertically and 100m horizontally.
- SANIBEST® Pro is an high performance macerator, especially designed for intensive use.

SANIBEST® Pro



PRODUCT ADVANTAGES

- High performance blade for commercial use
- Direct access to the electrical parts through the cover
- Multiple connections (toilet, sink, shower, bidet)
- Flow rate : >140L/min

Prefabricated accommodation for mine workers



Bathrooms connected to SANIBEST® Pro



SANIBEST® Pro removes waste water to a holding tank



BANK

CHALLENGE

- Install toilets and a kitchen in the basement for bank staff.
- The main drainage pipe is located on the upper level.

SOLUTION

- A SANICUBIC® 2 Pro lifting station was installed in the basement to remove waste water from two toilets, two wash basins, one sink and a dishwasher to the main pipe located at street level.
- The SANICUBIC® 2 Pro is perfectly suited to commercial use and enables black and grey water to be drained up to 11 m vertically.



SANICUBIC® 2 Pro



PRODUCT ADVANTAGES

- Easy to install – Floor-standing
- High-performance cutting system
- Multiple inlet diameters (DN 40/50/100/110)
- 2 motors for double the security
- IP 68 rated

Bank frontage



Toilet installed in the basement



SANICUBIC® 2 Pro lifting station installed in the basement to remove waste water

FITNESS CENTRE

CHALLENGE

- Install a commercial shower room with toilets, wash basins and showers in the basement of a fitness centre.
- The main drainage pipe is located on the upper level.

SOLUTION

- A SANICUBIC® 2 XL lifting station was installed in the basement to drain waster water to the soil stack located at street level.
- SANICUBIC® 2 XL is a high-capacity lifting station (120 l) perfectly suited to intensive commercial uses and enables waste water to be pumped up to 10 m.



SANICUBIC® 2XL



PRODUCT ADVANTAGES

- Floor-standing
- Easy and quick to install
- Vertical discharge :up to 10 m (DN 100)
- 5 inlets (DN 40/50/100/110)
- IP68 rated

Upstairs fitness room



SANICUBIC® 2 XL
Installed in the technical
room



Collective bathroom
located in the basement

HAIRDRESSING SALON

CHALLENGE

- Evacuate hot, soapy water from the shampoo basins in this hairdressing salon.
- The main drainage pipe is too far away and no gravity drainage is possible.

SOLUTION

- A SANICOM® 1 lifting pump was installed near the shampoo basins to reach the main drainage pipe.
- Perfectly suited to commercial uses, SANICOM® 1 enables waste water to be pumped up to 8m vertically and 80m horizontally.
- Easy to install – Floor-standing.



SANICOM® 1



PRODUCT ADVANTAGES

- Easy to install – Floor-standing
- Working temperature of 90°C
- 2 inlets (DN 40) / 1 outlet (DN 32)
- Flow rate : >125L/min

Hair Salon



SANICOM® 1 installed near the hairdressing salon

Shampoo basins

BEAUTY SALON



CHALLENGE

- Install an additional WC for the customers of this beauty salon.
- The main drainage pipe is too far away and no gravity drainage is possible.

SOLUTION

- A SANICOMPACT® Pro WC with built-in macerator was installed to reach the main drainage pipe.
- Perfectly suited to commercial uses, SANICOMPACT® Pro enables waste water to be pumped up to 3m vertically and 30m horizontally.
- Its high performance macerator system allows waste to be removed in small diameter pipes (32mm) for a discreet installation.

SANICOMPACT® PRO



PRODUCT ADVANTAGES

- WC with built-in macerator
- Water saving : dual flush : 1.8/3L
- Silent operation
- Soft close toilet seat
- Wash basin inlet

Beauty salon



SANICOMPACT® Pro installed to create an additional toilet

FITNESS CENTRE / STEAM ROOM



SANICUBIC® 2 Pro



PRODUCT ADVANTAGES

- Easy to install – Floor-standing
- High-performance cutting system
- Multiple inlet diameters (DN 40/50/100/110)
- 2 motors for double the security
- IP 68 rated

CHALLENGE

- // Install toilets, wash basins, showers and a steam room cabin in the basement of a fitness centre.
- // The main drainage pipe is located on the upper level.

SOLUTION

- // A SANICUBIC® 2 Pro lifting station was installed to drain waste water from the toilets, wash basins, showers and a steam room cabin to the main soil stack.
- // The SANICUBIC® 2 Pro is perfectly suited to commercial use and enables black and grey water to be drained up to 11 m vertically.

Fitness centre



Steam room cabin



SANICUBIC® 2 Pro lift station installed in the basement



DENTAL CLINIC

CHALLENGE

- Convert offices into a dental clinic
- Evacuate waste water from the sinks without any gravity drainage available.
- Impossible to carry out heavy construction work or modify the structure of the existing office.

SOLUTION

- Several SANISHOWER® pumps were installed under each dentist's chair in order to drain waste water from the sinks to the main pipe on the upper level.
- Its small size enables discreet installation. SANISHOWER® discharges grey water up to 4m vertically and 40m horizontally without the need to undertake significant work.



SANISHOWER®



PRODUCT ADVANTAGES

- Space-saving
- Multiple connections (1 DN 32/40; 1 DN 40)
- Low level activation
- Flow rate : >70L/min

Dental practice



SANISHOWER® pumps installed to drain waste water from sinks



RETIREMENT HOME

CHALLENGE

- Installation of a laundry area in the basement of a retirement home.
- Remove hot and soapy waste water from the washing machines to send it to the main pipe located on the upper level.

SOLUTION

- A SANICOM® 1 lifting pump was installed near the washing machines to remove grey water to the main pipe located at street level.
- Perfectly suited to intensive commercial uses, SANICOM® 1 can drain hot, soapy water up to 8m vertically and 80m horizontally.



SANICOM® 1



PRODUCT ADVANTAGES

- Easy to install – Floor-standing
- Working temperature of 90°C
- 2 inlets (DN 40) / 1 outlet (DN 32)
- Flow rate : >125L/min

Retirement home



SANICOM® 1 lifting pump installed in the basement





NURSERY

CHALLENGE

- Convert offices into a nursery and install toilets without any nearby drainage.

SOLUTION

- SANITOP® macerators were installed behind each toilet to drain the waste water into the main drainage pipe.
- SANITOP® enables waste water from a toilet and a wash basin to be drained up to 5m vertically and 100m horizontally.
- Its high performance cutting system allows waste to be drained away in small diameter pipes (22/28/32mm) for discreet installation.



SANIBROYEUR® Pro



PRODUCT ADVANTAGES

- Possible connections: WC, wash basin
- Central access on the lid allows easy maintenance and removal of blockages
- Silent operation
- Carbon filter included, to neutralise odours

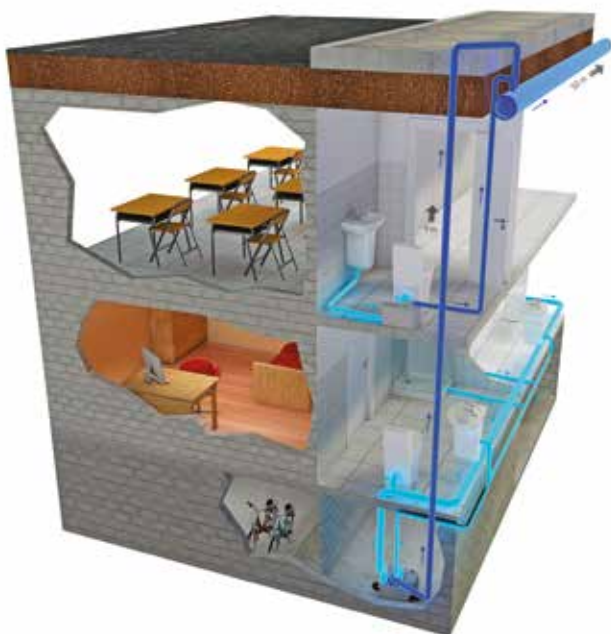
Nursery located on the 11th floor of an office building



SANITOP® installed to remove waste water from toilets to the main drainage pipe



UNIVERSITY CAMPUS



CHALLENGE

- Optimise the available space by fitting out student accommodation in a university building basement without any major construction work.
- Fit out additional lecture rooms with toilets nearby.

SOLUTION

- Twelve SANICUBIC® 2 Pro lifting stations were installed in the basement to drain waste water from toilets, wash basins and showers in apartments for drainage at street level.
- Several SANIBEST® Pro macerators were installed to drain waste water from toilets and wash basins near lecture rooms. Its high performance cutting system allows intensive use.

SANICUBIC® 2 Pro



SANIBEST® Pro



PRODUCT ADVANTAGES

- Easy to install – Floor-standing
- High-performance cutting system
- Multiple inlets diameters (DN 40/50/100/110)
- 2 motors for double the security
- IP 68 rated

PRODUCT ADVANTAGES

- High performance blade for commercial use
- Direct access to the electrical parts through the cover
- Multiple connections (toilet, sink, shower, bidet)
- Flow rate : >140L/min

University building



SANICUBIC® 2 Pro

SANIBEST® Pro



MOBILE BATHROOM



SANIPRO® XR



PRODUCT ADVANTAGES

- Possible connections : WC, wash basin, shower, bidet
- Central access on the lid allows easy maintenance and removal of blockages
- Silent operation
- Carbon filter included, to neutralise odours

CHALLENGE

/Create a mobile bathroom to be installed anywhere in the event of a house renovation, or events (concerts, sporting events,...).

SOLUTION

- // A SANIPRO® XR macerator was installed to create a fully mobile bathroom with toilet, wash basin and shower.
- // A water and electricity connection as well as a nearby sewer is all that is needed to install this bathroom.
- // Its high performance cutting system allows waste to be drained away in small diameter pipes (22/28/32mm) for discreet installation.

Mobile bathroom



SANIPRO® XR macerator



Toilet and shower installed

MOTORHOME

CHALLENGE

- Fit out a motorhome with a toilet located away from the waste water tank.
- Insufficient gravitational flow to allow the installation of a traditional toilet.

SOLUTION

- A SANICOMPACT® Pro, a toilet with integrated macerator, was installed in this motorhome, in a compartment away from the waste water tank.
- SANICOMPACT® Pro can drain waste water from a WC up to 3m vertically and 30m horizontally.
- Its high performance cutting system allows waste to be drained away in small diameter pipes (32mm) for discreet installation.



SANICOMPACT® PRO

PRODUCT ADVANTAGES

- WC with built-in macerator
- Water saving : dual flush : 1.8/3L
- Silent operation
- Soft close toilet seat
- Wash basin inlet



Motorhome



SANICOMPACT® Pro installed in order to drain waste water to the tank

CANAL BOAT

CHALLENGE

Convert an old canal boat into a home with all the creature comforts one might expect in a conventional house.

SOLUTION

Thanks to the installation of a SANIPLUS® macerator and a SANISPEED® pump, this old canal boat is now just as good as a conventional house, with three bedrooms, a bathroom with toilet, wash basin and shower, as well as a kitchen with a sink, a dishwasher and an ice machine.

All waste water is removed to the land-based drainage pipe near the boat.



SANIPLUS®



PRODUCT ADVANTAGES

- Large capacity tank, perfect for holding large volumes of water
- Vertical and horizontal backflow : 5 m / 100 m
- Silent operation
- Flow rate : >90L/min

SANISPEED®



PRODUCT ADVANTAGES

- Easy and quick to install
- Working temperature of 75°C
- Silent operation
- Flow rate : >100L/min

Canal boat



SANISPEED® pump discreetly installed under the sink

SANIPLUS® installed to remove waste water from the bathroom

WORK CAMP

CHALLENGE

- Fit out a base camp on a construction site by installing temporary accommodation for workers.
- Remove waste water from toilets, showers, wash basins and kitchens to a septic tank located 50m away from the accommodation.

SOLUTION

- Seventy seven SANICUBIC® 2 Pro lifting stations were installed to remove all waste water to the septic tank.
- SANICUBIC® 2 Pro is perfectly suited to commercial use and enables black and grey water from numerous sanitary devices to be removed up to 11m vertically.



SANICUBIC® 2 Pro



PRODUCT ADVANTAGES

- Easy to install – Floor-standing
- High-performance cutting system
- Multiple inlet diameters (DN 40/50/100/110)
- 2 motors for double the security
- IP 68 rated

Temporary worker accommodation



SANICUBIC® 2 Pro lifting station installed

SFA



41 bis Avenue Bosquet - 75007 Paris - France

Tel: +33 (0)1 44 82 39 20

www.sfa.biz